



## *PLACE MATTERS*

# Design Lab 8 ♦ Oakland, California Logic Model Presentation

Martin Luther King Jr. County



**King County**

# Vision for equity in King County

*What if all residents of King County had the same opportunities regardless of race, ethnicity, gender, immigration status, sexual orientation or disability?*

*To receive the same quality education, the same access to basic health care, the same opportunities to work for a living wage, the same access to affordable housing, the same ability to live in safe neighborhoods, and the same opportunity to enjoy the natural environment.*

*A new, better and very different King County would emerge.*

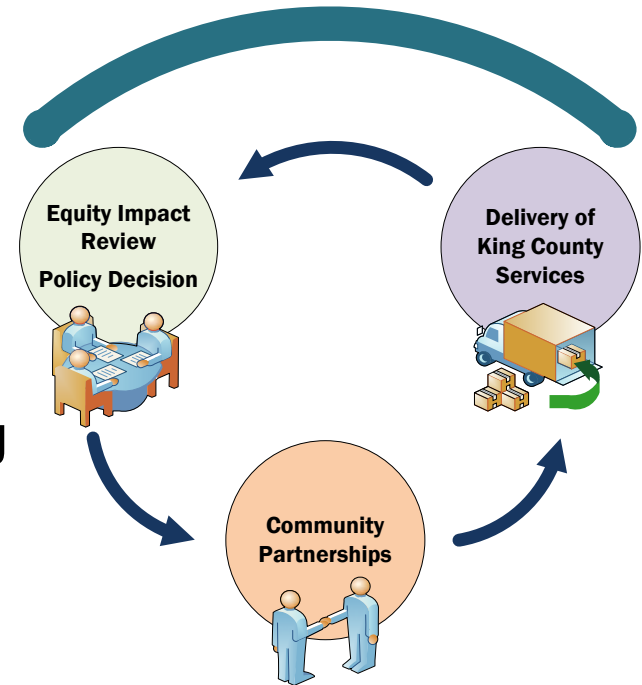
*We can be the catalyst for this change.*

-- Executive Ron Sims 2008 Budget Speech

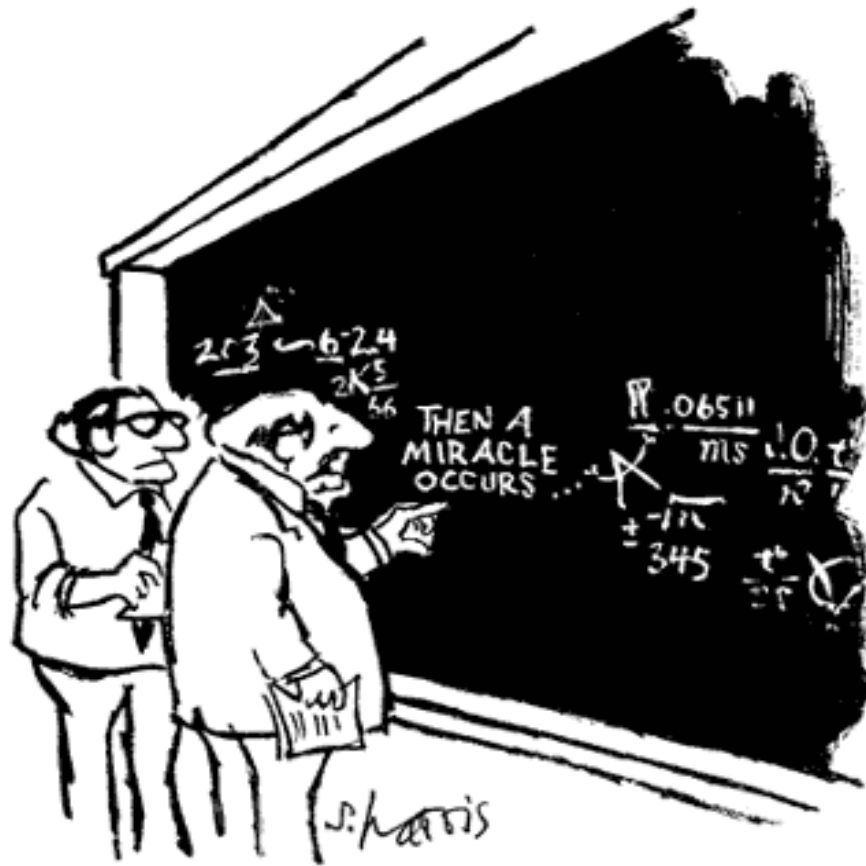
# Correcting Inequities and Promoting Equal Opportunity for all Residents

King County will make equity and social justice central to its work by focusing on three levels of action:

1. Policy development and decision making
2. Delivery of county services
3. Community partnerships



# Benefits and Challenges



"I think you should be more explicit here in step two."

# Benefits and Challenges of Logic Model Development

- **Process:** Listed all of the activities ongoing throughout the county related to equity and social justice
- **Learning:** Need to coordinate activities and develop a focal point; eliminate layers to implementation
- **Implementation:** The logic model shows interrelationships among the activities and gives a “checklist” for moving forward

# How the Logic Model will Change Social Determinants

- **Flow:** Worked from the impacts back to the resources needed
- **Elements:**
  - Key resources are: money, leadership, and staff
  - Key outcomes: empowered communities, reduction in chronic homelessness, and improved graduation rates

# How the Logic Model will Change Social Determinants

- ***Impacts:***
  - Equity and social justice incorporated (institutionalized) into daily practice of the county
  - Integration of other initiatives:
    - Children's access to health care
    - All individuals and families have access to safe and affordable housing
    - Residents have access to family wage jobs
    - Children enter school ready to learn
    - Residents have access to affordable and healthy foods

# Elements of the Logic Model

- Community dialogues and engagement
- Interdepartmental Team for accountability and oversight
- Equity Impact Review tool to guide decision-making
- Strengthen existing initiatives through equity focus

# Equity Impact Review Tool

- Implementation
  - Public Health
  - Other departments (e.g., transportation, natural resources)
  - Inter-departmental issues
- Training and technical support

# Community Engagement

- Unnatural Causes:  
Over 50 trained facilitators,  
including county employees  
and community members
- 100s of screenings (internal and  
community)
- Youth engagement: Facilitators and  
screenings



# Organization

- County inter-departmental teams
  - Leadership
  - Operations cabinet
- Advisory group
  - Business, community and political leaders

# Next Steps: Action and Implementation



- Form the Equity & Social Justice Initiative's Advisory Team
- Initiate strategic planning, informed by logic model
- Work with each King County department on implementing priority projects
- [www.kingcounty.gov/equity](http://www.kingcounty.gov/equity)