

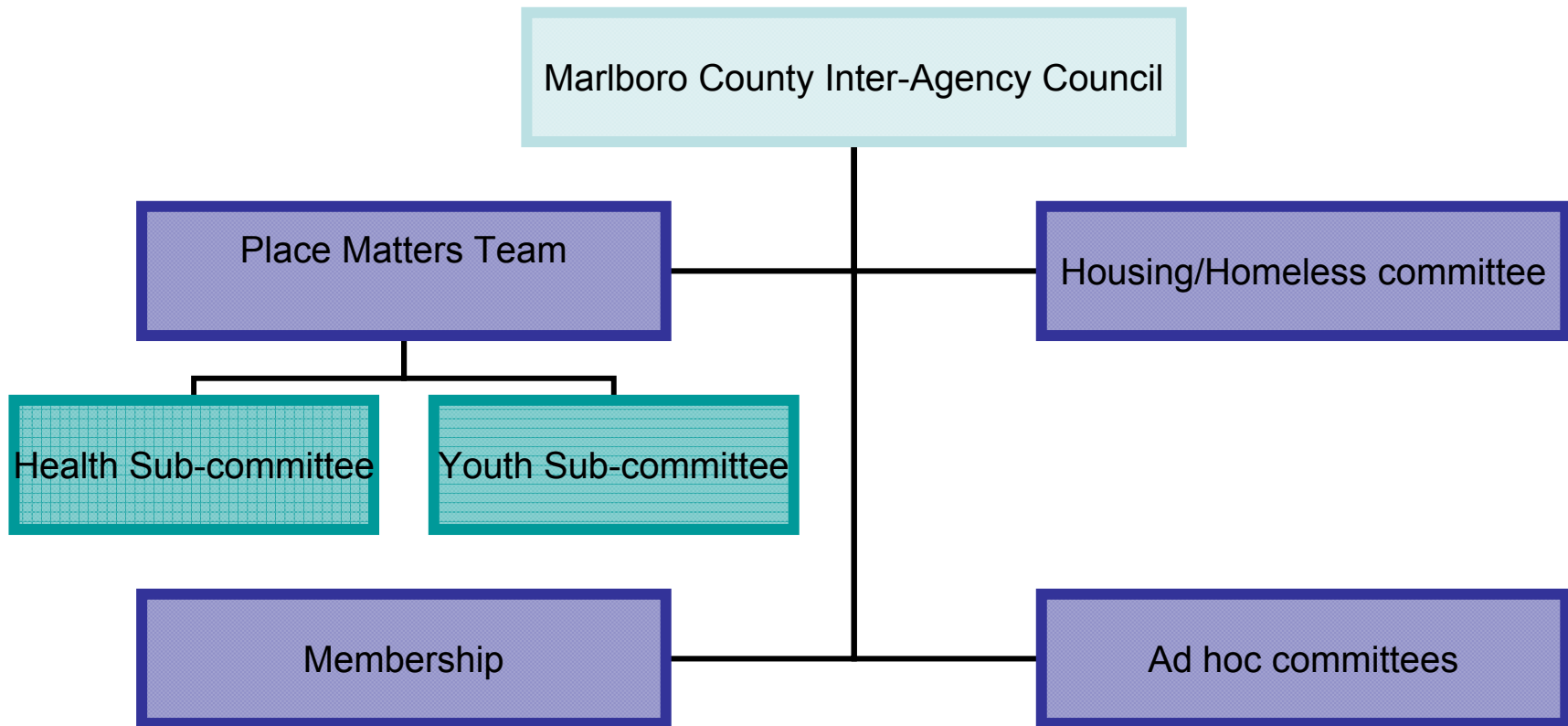


PLACE MATTERS

Design Lab 8 ♦ Oakland, California
Logic Model Presentation

Marlboro County, SC Place Matters Team

Marlboro County Place Matters Team



Marlboro County Place Matter's Team Targeted Impact Goals



Health Access

- By 2018, optimize healthcare access and quality, and increase the use of prevention and early detection as evidenced by a reduction of 20% in the use of the ER for primary health and mental health care.

Education

- By 2018, reduce the risk factors and support the healthy behaviors among children and youth as evidenced by a change in the Expulsion Policy to focus on school attendance rather than expulsion.



Changes To Original Plans

- Broadened original impact statements.
- Added a new focus for our youth sub-committee: assure students who graduate benefit from that achievement.
- Collaborated with new partners necessary to reach goals.
- Blended current projects with similar goals.



Benefits and How We Will Use Our Logic Model



- Sorts out Place Matters versus other Inter-Agency activities
- Gives a clear written and visual map of goals, impact and process for everyone
- Keeps us on track with re-assessing progress and activities
- Will serve as quarterly report format

Challenges

- Scheduling to insure everyone gets input
- Strong, talented leaders learning to work together
- Staying focused

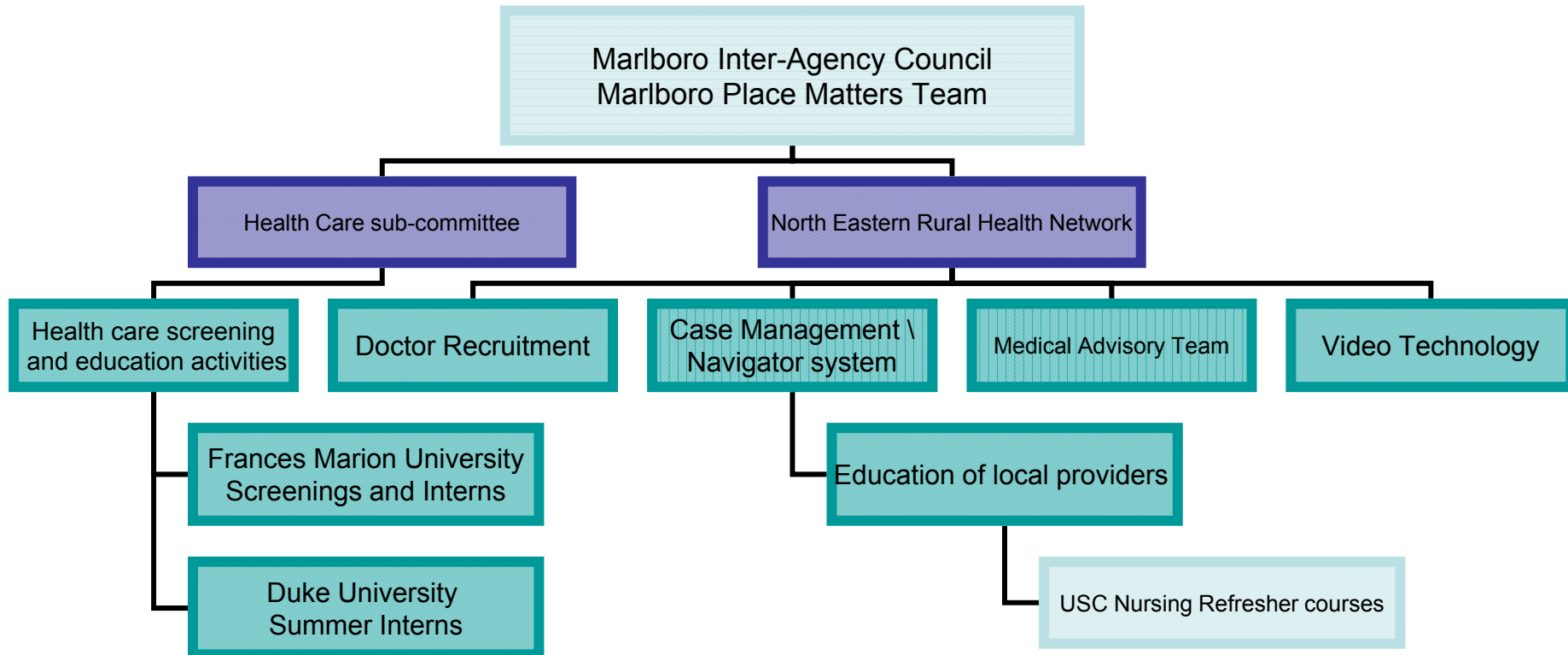


What We have Learned From Our Logic Model

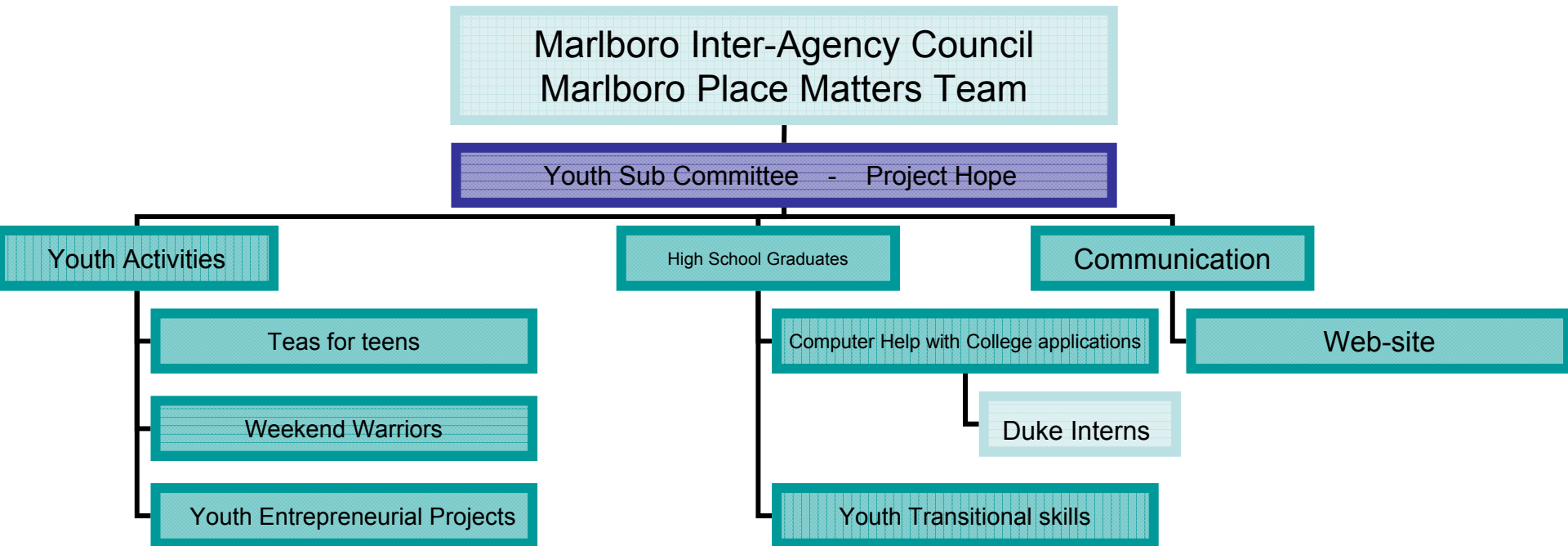


- Some key players are still not engaged
- Still learning what is already in our community
- Logic model continues to evolve
- We are a catalyst to many activities

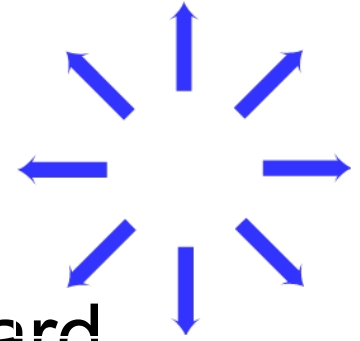
Health Access



School Retention



NEXT STEPS



- Meet with Budget and Control Board benchmarking data
- Proceed with Unnatural Causes forums
- Have Economic Development Board presentation to Inter-Agency Council
- Monitor and apply for grants
- Participate in regional, state, and national policy making forums