

# Overcoming Maternal and Child Health Disparities through Leadership

Georgetown University

March 24, 2006

Linda A. Randolph, MD, MPH  
President & CEO  
Developing Families Center, Inc.

---

---

---

---

---

---

---

---

## PLACE MATTERS

Design Lab #1

Joint Center Health Policy Institute

June 30, 2006

Linda A. Randolph, MD MPH  
President & CEO  
Developing Families Center, Inc.  
Washington, DC

---

---

---

---

---

---

---

---

## Healthcare Disparities in Washington, DC

*What is happening in our own neighborhood?*

---

---

---

---

---

---

---

---

## The Promise of the Possible:

### The Developing Families Center

801 17<sup>th</sup> Street, NE

Washington, DC 20002

---

---

---

---

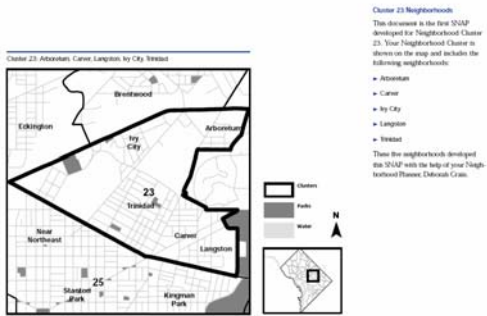
---

---

---

---

## Our Neighborhood



---

---

---

---

---

---

---

---

## Key Assets

- The historic Langston Golf Course is one of three inner-city public golf facilities in Washington, DC. The course, built on an old landfill, was opened in 1939 as a segregated golf facility for African-Americans. It is listed in the National Register of Historic Places for its social and historical significance.

---

---

---

---

---

---

---

---

### Key Assets (continued)

- The National Arboretum has as its mission to conduct research; provide education; and conserve and display trees, shrubs, flowers, and other plants to enhance the environment.



---

---

---

---

---

---

---

---

### Key Assets (continued)

- Langston Dwellings, designed by Hilyard R. Robinson, an African-American architect, is one of the first federally financed public housing complexes in Washington, DC.

---

---

---

---

---

---

---

---

### Key Assets (continued)

- Hechinger Mall, the major retail center for Cluster 23, includes vendors such as National Wholesale Liquidators, Safeway, Ashley Stewart, Modell's, Blockbuster Video, the U.S. Post Office and Subway Sandwich Shop.



---

---

---

---

---

---

---

---

Key Assets (continued)

- Gallaudet University, the world's only university where all programs and services are specifically designed to accommodate students who are deaf or hard of hearing, was founded in 1864 by an act of Congress, and its charter was signed by President Abraham Lincoln.

---

---

---

---

---

---

---

---

Key Assets (continued)

- The Gallaudet University Kellogg Conference center (GUKCC), a state-of-the-art, 150,000-square-foot conference and training facility, opened its doors on campus in 1995. The center is a model of accessibility and was specifically designed to create an environment for excellence in communication and education.

---

---

---

---

---

---

---

---

Key Assets (continued)

- The Florida Avenue Market, long considered a diamond in the rough, not only provides food and other products to commercial businesses throughout the District, but also supplies local residents with an alternative shopping venue.

---

---

---

---

---

---

---

---

***“Infant mortality is not a health problem. It is a social problem with health consequences”***

Wagner, M. (1988) Testimony before the US Commission to Prevent Infant Mortality. Unpublished paper. 9pp. Presented at a hearing “International Infant Mortality Comparisons” held Feb.1, 1988 at the United Nations

---

---

---

---

---

---

---

---

**Population - Washington, DC**

	<b>Ward 5</b>	<b>Ward 6</b>
Population, 1980	89,145	77,312
Population, 1990	83,145	72,486
Population, 2000	71,604	68,087
% change population, 1980-1990	-6.7	-6.2
% change population, 1990-2000	-14	-6.1

---

---

---

---

---

---

---

---

**Population (continued)**

	<b>Ward 5</b>	<b>Ward 6</b>
% of Children, 1980	22	21
% of Children, 1990	20	16
% of Children, 2000	21	17
% change children, 1980-1990	-16	-26
% change children, 1990-2000	-6.8	-0.4

---

---

---

---

---

---

---

---

### Population (continued)

	Ward 5	Ward 6
% Foreign-born, 1980	2.6	3.4
% Foreign-born, 1990	3.4	5.0
% Foreign-born, 2000	5.2	6.7

---

---

---

---

---

---

---

---

### Population by Race/Ethnicity

	Ward 5	Ward 6
% Black (non-Hispanic), 1990	86	65
% Black (non-Hispanic), 2000	88	63
% White (non-Hispanic), 1990	11	31
% White (non-Hispanic), 2000	7.4	30
% other race (non-Hispanic), 1990	1.2	1.9
% other race (non-Hispanic), 2000	3.0	3.0
% Hispanic, 1990	1.4	1.9
% Hispanic, 2000	3.0	3.2

---

---

---

---

---

---

---

---

### Comparison of Economic Status

Area	Unemployment	Median Household Income	Per capita Income	Below Poverty	High School Graduates
Ward 5	8.8%	\$34,433	\$19,173	20%	66%
Ward 6	7.8%	\$41,544	\$28,636	21%	66%
DC	6.4%	\$40,127	\$28,659	20%	73%

---

---

---

---

---

---

---

---

## Child Well-Being Indicators

	Ward 5	Ward 6
Children in families below FPL, 1990	19%	56%
Children in families below FPL, 2000	28%	80%

FPL = Federal Poverty Level, 2000 \$17,050 (four person family)

---

---

---

---

---

---

---

---

## Family Risk Factors

	Ward 5	Ward 6
Female headed households, 1990	56%	57%
Female headed households, 2000	80%	75%

---

---

---

---

---

---

---

---

## Child Welfare Indicators, June 2004

Area	Children Receive TANF	Children Receive Food Stamps	Children Receive Medicaid	Children Below Poverty (2000)
Ward 5	4628	5346	8647	28%
Ward 6	4579	5357	7920	36%
DC	33211	38990	71953	32%

Source: Every Kid Counts in the District of Columbia: 11th Annual Fact Book, 2004, DC Kids Count Collaborative for Children and Families, p. 44

---

---

---

---

---

---

---

---

**Percent Current Substance Use by Ward,  
Non-Institutionalized Population (2000)**

Area	Tobacco	Alcohol	Illicit Drugs
Ward 5	30.5%	42.8%	14.0%
Ward 6	30.1%	46.4%	5.3%
District of Columbia	25.7%	50.1%	9.6%

---

---

---

---

---

---

---

---

**Number and Rate\* of Five Leading Causes of Death  
by Ward; DC Residents, 2000**

Cause	Total	Ward 5	Ward 6
All Causes	5945	924	707
Number Rate	1039.2	1388.5	1080.1
<b>Heart Disease</b>	1566	227	164
Number Rate	273.7	341.1	250.5
<b>Cancer</b>	1329	235	153
Number Rate	232.3	353.1	233.7
<b>Hypertension</b>	236	40	28
Number Rate	41.3	60.1	42.8
<b>Cerebrovascular Diseases</b>	226	31	27
Number Rate	39.5	46.6	41.2
<b>HIV/AIDS</b>	225	26	35
Number Rate	39.3	39.1	53.5

\*Crude death rates are per 100,000 population.

---

---

---

---

---

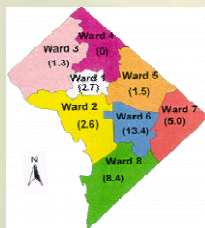
---

---

---

**1996 DC Resident Death Rates from  
Asthma (per 100,000 estimated population)**

Ward Rates	
Ward 1	(2.7)
Ward 2	(2.6)
Ward 3	(1.3)
Ward 4	(0)
Ward 5	(1.5)
Ward 6	(13.4)
Ward 7	(5.0)
Ward 8	(8.4)



1996 Total District Asthma Mortality Rate = 4.0

---

---

---

---

---

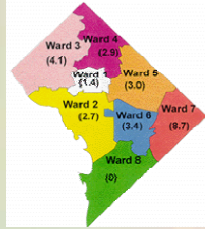
---

---

---

1997 DC Resident Death Rates from Asthma (per 100,000 estimated population)

Ward Rates	
Ward 1 - (1.4)	
Ward 2 - (2.7)	
Ward 3 - (4.1)	
Ward 4 - (2.9)	
Ward 5 - (3.0)	
Ward 6 - (3.4)	
Ward 7 - (8.7)	
Ward 8 - (0)	



1996 Total District Asthma Mortality Rate = 2.8

---

---

---

---

---

---

---

---

DC Resident Infant Mortality Rates by Ward, 2002 and 2003

Infant Mortality Rate*			
	2003	2002	Percent Change
DC	10.0	11.5	-13.0
Ward 5	13.9	11.4	21.9
Ward 6	8.4	12.9	-34.9

\*Infant deaths per 1,000 live births.

---

---

---

---

---

---

---

---

Total DC Resident Live Births by Ward and Age of Mother (2002)

TOTAL	Ward 5	Ward 6
7494	787	850
Under 15	3	0
15 - 19	137	106
20 - 24	215	192
25 - 29	180	170
30 - 34	138	215
35 - 39	94	127
40 - 44	20	40
45 & Over	0	0

---

---

---

---

---

---

---

---

Total DC Resident Live Births to Unmarried Mother by Ward and Age of Mother (2002)

TOTAL	Ward 5	Ward 6
4233	582	477
Under 15	3	0
15 – 19	135	103
20 – 24	195	170
25 – 29	121	92
30 – 34	73	62
35 – 39	48	34
40 – 44	7	16
45 & Over	0	0

---

---

---

---

---

---

---

---

---

---

Total Resident Births by Weight, Gestation Period and Prenatal Care by Race and Ward, Black (2002)

	Live Births	Birth Weight <2500 grams	<37 Weeks Gestation	Care Under 15 weeks & 10+ visits
<b>DC</b>	4532	662	642	1914
<b>Ward 5</b>	709	97	107	300
<b>Ward 6</b>	559	90	75	230

---

---

---

---

---

---

---

---

---

---

**Once upon a time...**

---

---

---

---

---

---

---

---

---

---

Developing Families Center



Exterior Renovation of Existing Building

---

---

---

---

---

---

---

---

Developing Families Center



Existing Interior Conditions

---

---

---

---

---

---

---

---



---

---

---

---

---

---

---

---

## Community Engagement and Participation

- Focus groups
- Advisory Task Force/ Council
  - Employment
- Research and Evaluation

---

---

---

---

---

---

---

---



---

---

---

---

---

---

---

---



---

---

---

---

---

---

---

---




---

---

---

---

---

---

---

---

---

---

**DEVELOPING FAMILIES CENTER  
STATEMENT OF MISSION**  
RETREAT REVISION 2002

“We are a developing families center meeting the primary health care, social service and child development needs of underserved individuals and childbearing and childrearing families through a collaborative that builds on their strengths and promotes their empowerment.”

---

---

---

---

---

---

---

---

---

---

**Developing Families Center**  
[501(c)(3)]  
Holder of Deed to 801 - 17<sup>th</sup> Street, NE  
Washington, DC 20002

**Board of Directors (18 members)**  
Community Members (Total 9)  
Linda A. Randolph, President & CEO  
Trina L. Rubenstein  
Daniel M. Singer  
Lance W. Slaughter, Treasurer  
(5 TBD)

**Three Members from Each Lessee: (Total = 9)**

<b>FHBC</b>	<b>HBP</b>	<b>NCCFD</b>
Board of Directors Rhonda Walker Directors: L. Furr TBD	Board of Directors Rhonda Walker President and Executive Director	Board of Directors Travis H. Hardmon Executive Director
<b>Lessee #1</b> <b>Family Health and Birth Center</b> [501(c)(3)]  Board of Directors Current  Ruth W. Labic President and CEO  Functions: Birth Center with Maternity & Well-woman GYN care, Pediatrics, Parenting and Immunizations	<b>Lessee #2</b> <b>Healthy Babies Project</b> [501(c)(3)]  Board of Directors Current  Rhonda Walker President and Executive Director  Functions: Outreach, Case Management, Fathers and Teen support groups, Parenting and Drop-in Center	<b>Lessee #3</b> <b>Nation's Capital Child and Family Development</b> [501(c)(3)]  Board of Directors Current  Travis H. Hardmon Executive Director  Functions: Infant and Child Development, Case Management and Family Self-sufficiency Services

10/05/2005

---

---

---

---

---

---

---

---

---

---

## Functions of the DFC Umbrella

- Managing the facility
- Facilitating the collaboration among the three partners to integrate services for families
- Developing and implementing an evaluation plan
- Providing technical assistance for replication of the model
- Informing policymakers about strategies that work
- Marketing & communications

---

---

---

---

---

---

---

---

## Family Health and Birth Center:



### Outcomes

### Challenges

- *Reimbursement*
- *Malpractice*
- *Recruitment*

### Expanding the Vision

- *Charette*
- *Dental Health*
- *Family Health*

---

---

---

---

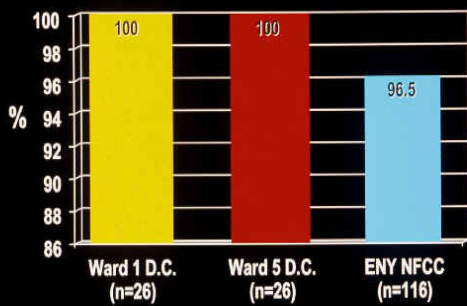
---

---

---

---

How important would it be to receive information (classes) on pregnancy, birth and newborn care?



---

---

---

---

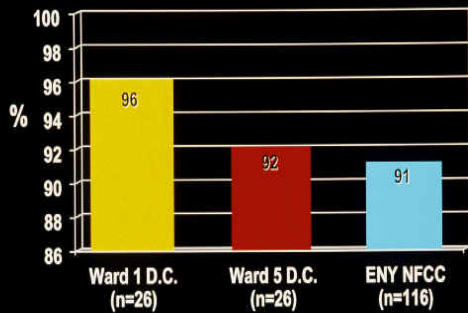
---

---

---

---

How important would it be to you to have more time spent with you during your prenatal visits?



---

---

---

---

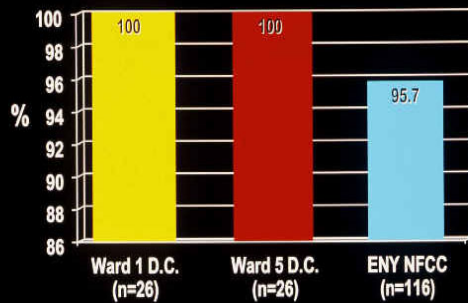
---

---

---

---

How important would it be to have a quiet, comfortable, private bedroom for your labor and birth?



---

---

---

---

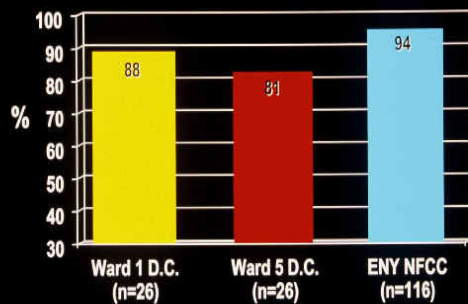
---

---

---

---

How important would it be to have family and/or friends with you during childbirth?



---

---

---

---

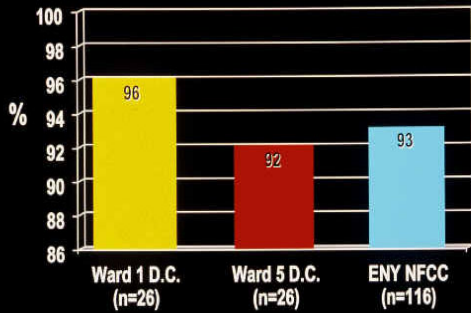
---

---

---

---

How important would it be to you to have the same nurse-midwives for your prenatal care and birth?



---

---

---

---

---

---

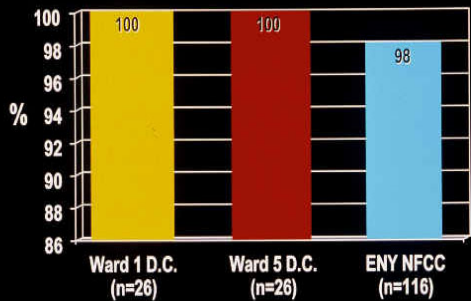
---

---

---

---

How important would it be to receive support services such as WIC, Financial Assistance, Social Services during your care?



---

---

---

---

---

---

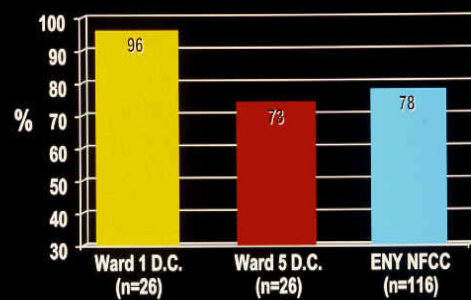
---

---

---

---

How important would it be to have freedom of movement (walk, bathe, shower, etc.), food and drink during your labor?



---

---

---

---

---

---

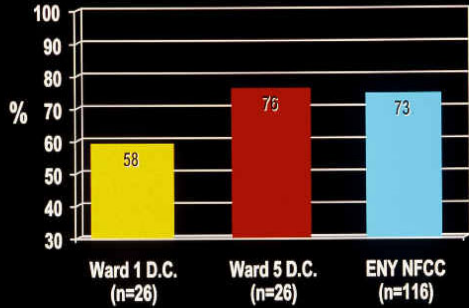
---

---

---

---

How important would it be not to have routine enemas, shaving, IV's, continuous monitoring during labor?



---

---

---

---

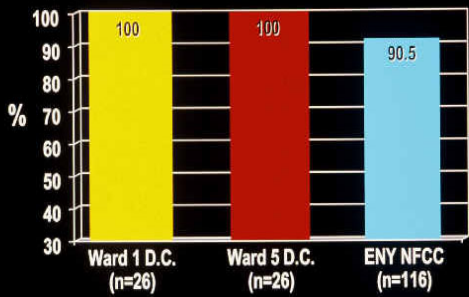
---

---

---

---

How important would it be not to be separated from your baby after birth?



---

---

---

---

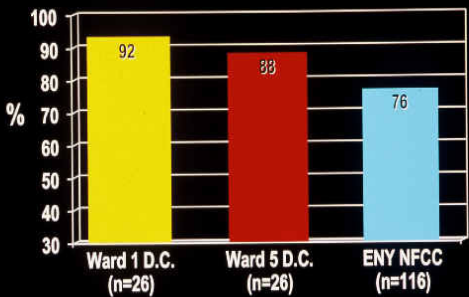
---

---

---

---

How important would it be to return home with your baby within 12 hours after birth?



---

---

---

---

---

---

---

---

## DFC Services through its Partners

- Helping in getting health insurance
- WIC Mobile Van every Wednesday 1-4pm (full service)
- DC Immunization Clinic Site 2nd and 4th Tuesday of the month 4:30-7:30pm (free shots for DC residents)
- Yearly physical exams (Pap tests, breast exams)
- HIV and other STD counseling, testing and treatment for females
- Birth control
- Change of life care
- Care for female health problems

---

---

---

---

---

---

---

---

## DFC Services through its Partners

- Free pregnancy testing and parenting classes
- Planning & preparing for a healthy pregnancy
- Fertility & infertility counseling
- Prenatal care (Group prenatal care offered)
- Pregnancy and childbirth classes
- Labor and birth care in our home-like Birth Center or at Washington Hospital Center with your midwife & family
- Breastfeeding support & help
- Well-baby/well-child care
- Sick-baby/sick-child care
- Physical exams for daycare, school, sports
- Youth/young adult health care (to age 21)

---

---

---

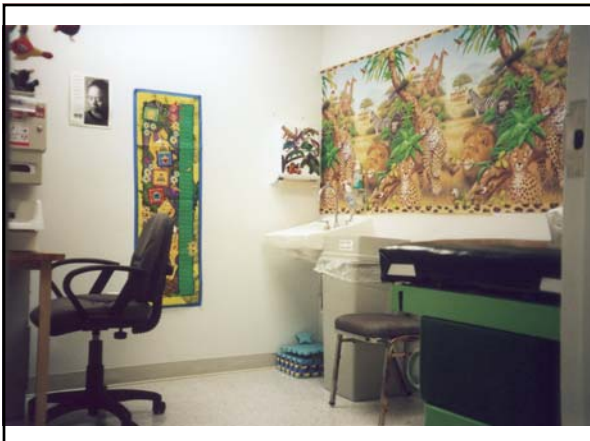
---

---

---

---

---



---

---

---

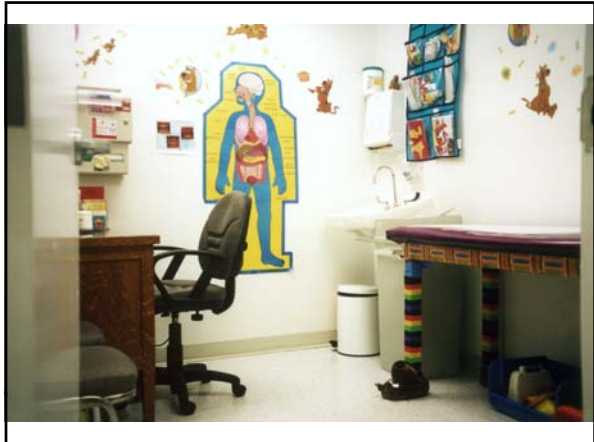
---

---

---

---

---



---

---

---

---

---

---

---

---



---

---

---

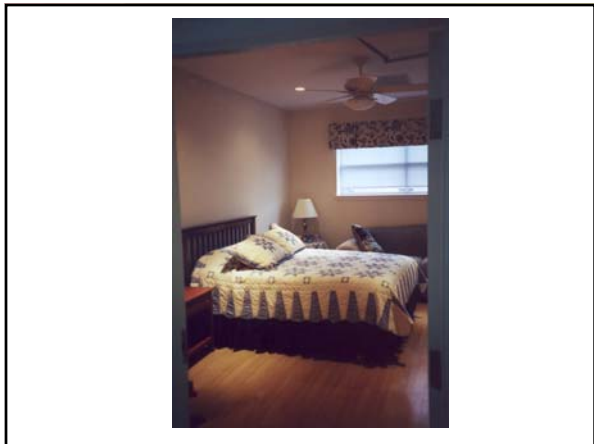
---

---

---

---

---



---

---

---

---

---

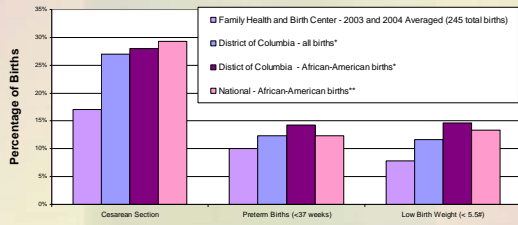
---

---

---

## Family Health and Birth Center

### Outcomes - Preliminary



\* DC Center for Health Statistics 2002  
 \*\* Health, United States, published in 2004 DHHS, CDC NCHS 2002  
 National Vital Statistics Reports, Vol. 52, No. 10, December 17, 2003

---

---

---

---

---

---

---

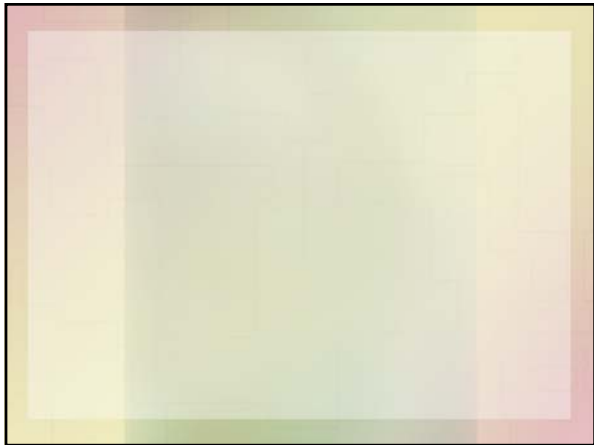
---

---

---

---

---




---

---

---

---

---

---

---

---

---

---

---

---

*"Infant mortality is not a health problem. It is a social problem with health consequences"*

Wagner, M. (1988) Testimony before the US Commission to Prevent Infant Mortality. Unpublished paper. 9pp. Presented at a hearing "International Infant Mortality Comparisons" held Feb. 1, 1988 at the United Nations

---

---

---

---

---

---

---

---

---

---

---

---

### Healthy Babies Project Experience serving Wards 5 & 6

High intensity need for social services and supports:

- Pregnant teens
- Homeless pregnant women
- Substance-abusing pregnant women

---

---

---

---

---

---

---

---

### DFC Services through its Partners

- Risk Assessment and Case Management
- Home Visitation
- Confidential Family Counseling and Referrals
- Crisis Intervention and Management
- Referrals for emergency services, job training, GED classes and educational services
- Parenting Classes
- Health Education Classes and and Special Events
- Monthly Book Club for Parents

---

---

---

---

---

---

---

---

### DFC Services through its Partners

- A Baby Book a Month for Babies and Parents who are expecting a baby
- Prenatal Education and Support Group
- Childbirth Education Classes
- Prenatal Yoga Classes
- Smoking Cessation Classes
- Individual Care Plans for everyday enrolled family

---

---

---

---

---

---

---

---

Healthy Babies Project  
Activity Room



---

---

---

---

---

---

---

---

Healthy Babies Project  
Activity Room



---

---

---

---

---

---

---

---

Nation's Capital Child & Family  
Development's Experience serving City-  
wide (including Ward 5)

- Waiting list of 5000 families for infant child care
- Health services for young children often difficult to find

---

---

---

---

---

---

---

---

## DFC Services through its Partners

- Education and Early Childhood Development
- Child Developmental Services and Mental Health
- Child Nutrition
- Services to Children with Disabilities
- Before and After School Programs
- First-Time Homebuyer Assistance
- Earned Income Tax Credit Assistance

---

---

---

---

---

---

---

---



---

---

---

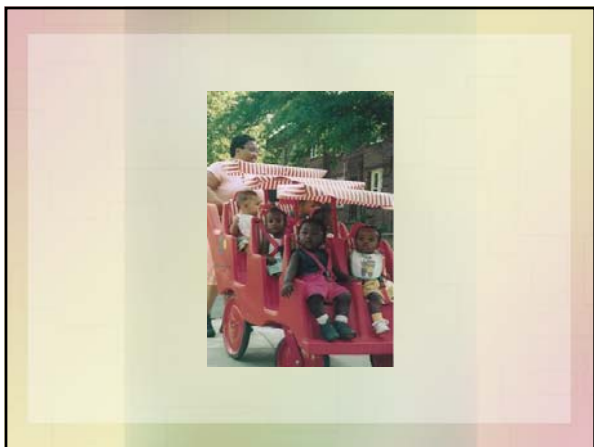
---

---

---

---

---



---

---

---

---

---

---

---

---




---

---

---

---

---

---

---

---

## Collaboration

[www.fieldstonealliance.org](http://www.fieldstonealliance.org)

What is it?

- (An unnatural act between consenting adults)
- Based on results clearly defined; relationships that are deft; a structure that is resilient, leading to productive action

Why collaborate?

- Service integration
- Resolving complex issues

Karen Ray  
The Nimble Collaboration

---

---

---

---

---

---

---

---

## Alcohol Outlets

	DC	Ward 1	Ward 2	Ward 3	Ward 4	Ward 5	Ward 6	Ward 7	Ward 8
<b>Total No. of Licensed Outlets</b>	1,556	264	609	153	103	137	206	43	41
<b>Restaurants and Taverns Percentage</b>	890 58%	142 54%	484 79%	110 72%	30 29%	24 18%	95 46%	4 9%	1 2%
<b>Liquor and Convenience Stores Percentage</b>	666 43%	122 46%	125 21%	43 28%	73 71%	113 82%	111 82%	39 91%	40 98%

Note: "Restaurants and Taverns" also includes hotels, nightclubs and private clubs.  
Source: D.C. Department of Consumer and Regulatory Affairs, 1995

---

---

---

---

---

---

---

---



---

---

---

---

---

---

---

---

**Quotations**

If you do what you've always done, you'll get what you've always gotten. Anonymous

There are three kinds of groups: Those which make things happen; those which wait for things to happen; and those who wonder what happened. Anonymous

---

---

---

---

---

---

---

---

**Quotations**

And if ever I touched a  
life I hope that  
life knows  
that I know that  
touching is and always  
will be the true  
Revolution Nikki Giovanni

---

---

---

---

---

---

---

---

## Quotations

You who are health providers must also be agents of forgiveness, of reconciliation, of *ubuntu* (the essence of being human). For you see, we are created for togetherness, we are created for harmony, we are created for family.

Desmond Tutu, Archbishop of South Africa and Nobel Laureate

---

---

---

---

---

---

---

---